

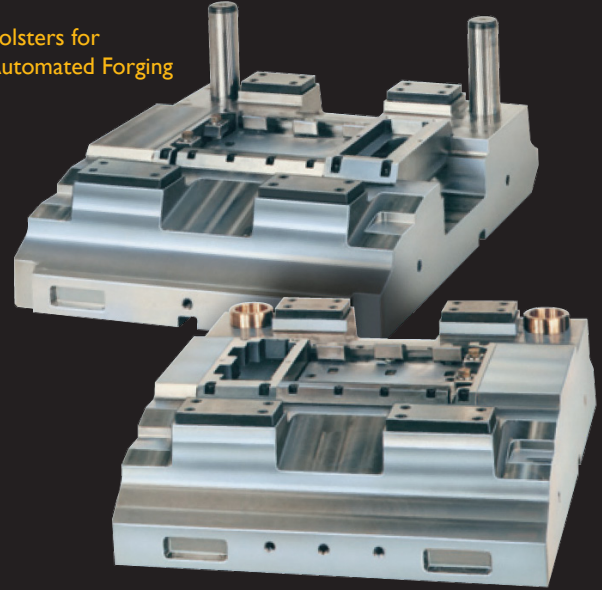


# FORGE-RITE™ STEEL

This hot-rolled 4340 alloy steel is a proprietary material specially formulated for the manufacture of forging equipment and tooling. It is a tough, shock resistant nickel-chrome-moly steel with optimum grain flow characteristics. It is supplied "stress relieved" at 215-255 Bhn with improved machinability. Typical applications include those with severe impact, heat, wear, and stress.

FORGE-RITE CHEMICAL COMPOSITION					
%					
C	MN	SI	NI	CR	MO
.35	.60	.40	1.65	.60	.25
.45	.90	.60	2.00	.90	.35

Bolsters for Automated Forging



## BOLSTERS

- Top & Bottom Bolster
- Clamps
- Die Holders
- Side Wedges

## HAMMER PARTS

- Piston Head
- Tie Plate
- Guides
- Wedges
- Ram Bushings
- Rams
- Sow Blocks
- Sow Block Keys
- Die Sets for Hot Trimming Applications



900 W. Drexel Avenue • Oak Creek, WI 53154  
 Phone (800) 558-6040 • Fax (800) 657-0855  
[www.superiordieset.com](http://www.superiordieset.com)  
[messages@superiordieset.com](mailto:messages@superiordieset.com)