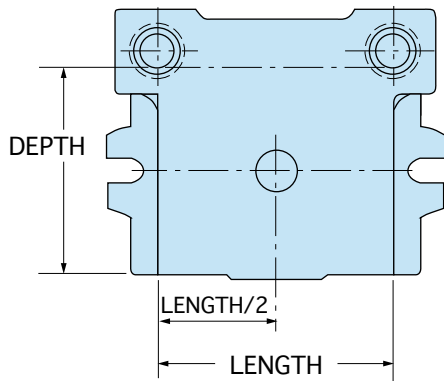
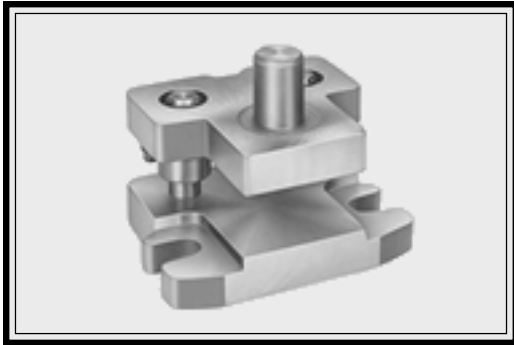


# Stock Die Sets

*Over 100 Die Sets  
Available for  
Immediate  
Delivery!*



## STYLE 20B STOCK DIE SETS

Superior Style 20B Stock Die Sets are available in a wide range of work area dimensions, punch holder and die shoe thicknesses, guide pin and bushing options. Style 20B Stock Die Sets are available with only bolt slot flanges and welded shanks in either 1 1/2" (A) or 1 9/16" (B) diameters.

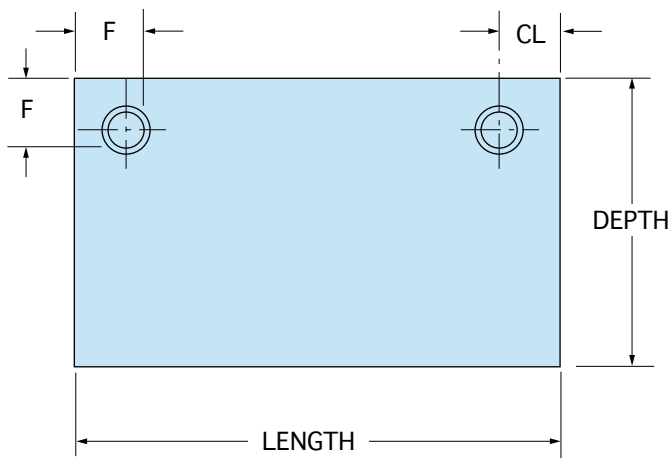
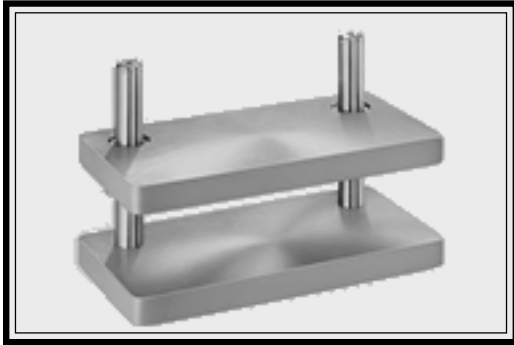
### WHEN ORDERING PLEASE SPECIFY:

1. Style 20B
2. Quantity
3. Catalog Number
4. Pin Length
5. Bushing Length (1", 2" or 3")  
Bushings Material (steel, bronze or Bronze-Rite™)

WORK AREA		THICKNESS		PIN DIA	CATALOG NUMBER
DEPTH	LENGTH	PH	DS		
4	4	1 1/4	1 1/2	1	S1-0404A12
4	4	1 1/4	1 1/2	1	S1-0404B12
4	5	1 1/4	1 1/2	1	S1-0405A12
4	6	1 1/4	1 1/2	1	S1-0406A12
4	8	1 1/4	1 1/2	1	S1-0408A12
5	5	1 1/4	1 1/2	1	S1-0505A12
5	5	1 1/4	1 1/2	1	S1-0505B12
5	6	1 1/4	1 1/2	1	S1-0506A12
5	7	1 1/4	1 1/2	1	S1-0507A12
5	10	1 1/2	1 1/2	1 1/4	S1-0510A22
6	6	1 1/4	1 1/2	1	S1-0606A12
6	6	1 1/4	1 3/4	1	S1-0606A13
6	6	1 1/2	1 1/2	1	S1-0606A22
6	6	1 1/2	1 3/4	1	S1-0606A23
6	6	1 1/4	1 1/2	1	S1-0606B12
6	6	1 1/4	1 3/4	1	S1-0606B13
6	6	1 1/2	1 1/2	1	S1-0606B22
6	6	1 1/2	1 3/4	1	S1-0606B23
6	8	1 1/4	1 1/2	1 1/4	S1-0608A12
6	12	1 1/4	1 1/2	1 1/4	S1-0612A12

WORK AREA		THICKNESS		PIN DIA	CATALOG NUMBER
DEPTH	LENGTH	PH	DS		
7	7	1 1/4	1 1/2	1 1/4	S1-0707A12
7	10	1 1/4	1 1/2	1 1/4	S1-0710A12
8	8	1 1/4	1 1/2	1 1/4	S1-0808A12
8	8	1 1/4	1 3/4	1 1/4	S1-0808A13
8	8	1 1/2	1 1/2	1 1/4	S1-0808A22
8	8	1 1/2	1 3/4	1 1/4	S1-0808A23
8	8	1 1/4	1 1/2	1 1/4	S1-0808B12
8	8	1 1/4	1 3/4	1 1/4	S1-0808B13
8	8	1 1/2	1 1/2	1 1/4	S1-0808B22
8	8	1 1/2	1 3/4	1 1/4	S1-0808B23
10	10	1 1/4	1 1/2	1 1/4	S1-1010A12
10	10	1 1/4	1 3/4	1 1/4	S1-1010A13
10	10	1 1/2	1 1/2	1 1/4	S1-1010A22
10	10	1 1/2	1 3/4	1 1/4	S1-1010A23
10	10	1 1/4	1 1/2	1 1/4	S1-1010B12
10	10	1 1/4	1 3/4	1 1/4	S1-1010B13
10	10	1 1/2	1 1/2	1 1/4	S1-1010B22
10	10	1 1/2	1 3/4	1 1/4	S1-1010B23

## STYLE 25 STOCK DIE SETS



## STYLE 25 STOCK DIE SETS

Superior Style 25 Stock Die Sets are available in a two pin back post design. These die sets are also offered in a wide choice of work area dimensions, punch holder and die shoe thicknesses, guide pin and bushing options. Style 25 Stock Die Sets are furnished without a shank.

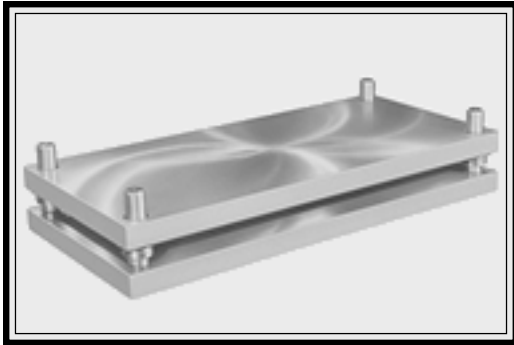
### WHEN ORDERING PLEASE SPECIFY:

1. Style 25
2. Quantity
3. Catalog Number
4. Pin Length
5. Bushing Length (1", 2" or 3")  
Bushing Material (steel, bronze or Bronze-Rite™)

OVERALL		THICKNESS		PIN DIA	CATALOG NUMBER
DEPTH	LENGTH	PH	DS		
8	8	1 1/4	1 1/4	1 1/4	S2-0808-11
8	8	1 1/4	1 1/2	1 1/4	S2-0808-12
8	8	1 1/2	1 1/4	1 1/4	S2-0808-21
8	8	1 1/2	1 1/2	1 1/4	S2-0808-22
8	10	1 1/4	1 1/4	1 1/4	S2-0810-11
8	10	1 1/4	1 1/2	1 1/4	S2-0810-12
8	10	1 1/4	1 3/4	1 1/4	S2-0810-13
8	10	1 1/2	1 1/4	1 1/4	S2-0810-21
8	10	1 1/2	1 1/2	1 1/4	S2-0810-22
8	10	1 1/2	1 3/4	1 1/4	S2-0810-23
8	12	1 1/2	1 1/2	1 1/2	S2-0812-22
10	10	1 1/4	1 1/2	1 1/4	S2-1010-12
10	10	1 1/4	1 3/4	1 1/4	S2-1010-13
10	10	1 1/2	1 1/2	1 1/4	S2-1010-22
10	10	1 1/2	1 3/4	1 1/4	S2-1010-23
10	12	1 1/4	1 1/2	1 1/2	S2-1012-12
10	12	1 1/4	1 3/4	1 1/2	S2-1012-13
10	12	1 1/2	1 1/2	1 1/2	S2-1012-22
10	12	1 1/2	1 3/4	1 1/2	S2-1012-23
10	12	1 3/4	1 1/2	1 1/2	S2-1012-32
10	12	1 3/4	1 3/4	1 1/2	S2-1012-33

OVERALL		THICKNESS		PIN DIA	CATALOG NUMBER
DEPTH	LENGTH	PH	DS		
10	14	1 1/2	1 1/2	1 1/2	S2-1014-22
10	16	1 1/2	1 1/2	1 1/2	S2-1016-22
12	12	1 1/2	1 1/2	1 1/2	S2-1212-22
12	12	1 1/2	1 3/4	1 1/2	S2-1212-23
12	12	1 1/2	2	1 1/2	S2-1212-24
12	12	1 3/4	1 1/2	1 1/2	S2-1212-32
12	12	1 3/4	1 3/4	1 1/2	S2-1212-33
12	12	1 3/4	2	1 1/2	S2-1212-34
12	12	2	1 1/2	1 1/2	S2-1212-42
12	12	2	1 3/4	1 1/2	S2-1212-43
12	12	2	2	1 1/2	S2-1212-44
12	14	1 1/2	1 1/2	1 1/2	S2-1214-22
12	16	1 1/2	1 1/2	1 1/2	S2-1216-22
8	10	1 1/4	1 1/2	1 1/4	S2F0810-12
8	10	1 1/2	1 1/2	1 1/4	S2F0810-22
10	10	1 1/4	1 1/2	1 1/4	S2F1010-12
10	10	1 1/2	1 1/2	1 1/4	S2F1010-22
10	12	1 1/2	1 1/2	1 1/2	S2F1012-22
12	12	1 1/2	1 1/2	1 1/2	S2F1212-22
12	14	1 1/2	1 1/2	1 1/2	S2F1214-22
12	14	1 1/2	1 3/4	1 1/2	S2F1214-23

These sizes manufactured from Fortal®

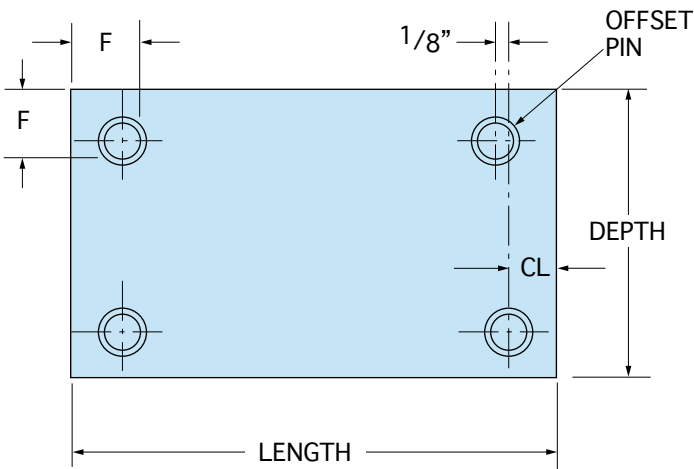


**STYLE 75 STOCK DIE SETS**

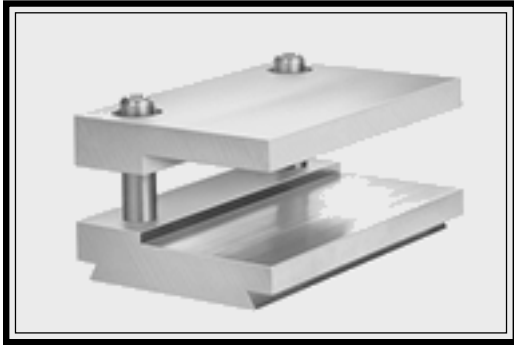
Superior Style 75 Stock Die Sets are four pin sets designed for applications where multi-directional or unequal tooling forces are generated by a non-symmetrical die shape or heavy stock. The four pin arrangement provides maximum resistance to side thrust and misalignment. On Style 75 Stock Die Sets, the right rear pin is offset 1/8" to left direction to prevent reversing of the punch holder during assembly. Left to right feed (System LR) bushing clamp location is standard on Style 75 Stock Die Sets. Style 75 Stock Die Sets are furnished without a shank.

**WHEN ORDERING PLEASE SPECIFY:**

1. Style 75
2. Quantity
3. Catalog Number
4. Pin Length
5. Bushing Length (1", 2" or 3")  
    Bushing Material (steel, bronze or Bronze-Rite™)



OVERALL		THICKNESS		PIN DIA	CATALOG NUMBER
DEPTH	LENGTH	PH	DS		
10	10	1 1/4	1 1/2	1 1/4	S4-1010-12
10	12	1 1/4	1 1/2	1 1/2	S4-1012-12
10	14	1 1/2	1 1/2	1 1/2	S4-1014-22
10	16	1 1/2	1 1/2	1 1/2	S4-1016-22
12	12	1 1/2	1 1/2	1 1/2	S4-1212-22
12	14	1 1/2	1 1/2	1 1/2	S4-1214-22
12	16	1 1/2	1 1/2	1 1/2	S4-1216-22
12	18	1 1/2	1 1/2	1 1/2	S4-1218-22
14	14	1 1/2	1 1/2	1 1/2	S4-1414-22
14	16	1 1/2	1 1/2	1 1/2	S4-1416-22
14	18	1 1/2	1 1/2	1 1/2	S4-1418-22

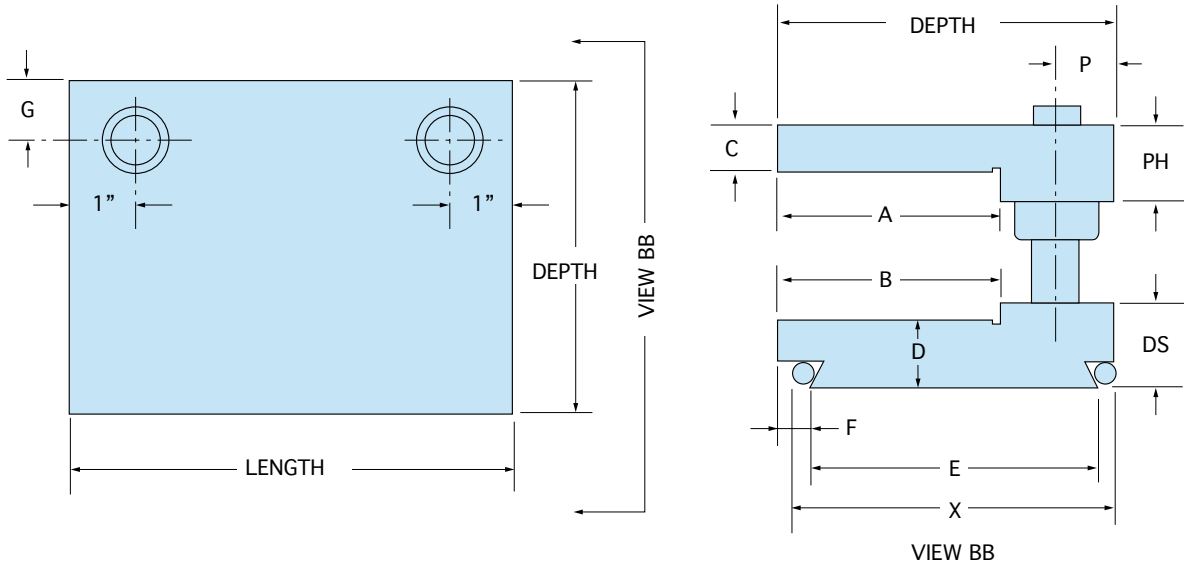


**MULTI-SLIDE STOCK DIE SETS**

Superior Multi-Slide Stock Die Sets are manufactured to meet or exceed specifications required on Four-Slide machines. Superior has these die sets available from stock in three styles and sizes. Multi-Slide Stock Die Sets are manufactured from Fortal®.

**WHEN ORDERING PLEASE SPECIFY:**

1. Quantity
2. Catalog Number



MULTI-SLIDE DIE SET SIZE INFORMATION																
STYLE	SIZE		THICKNESS		PIN LGTH											CATALOG NUMBER
	LGTH	DEPTH	PH	DS		A	B	C	D	E	F	G	P	X		
M-28	8	5.125	1.125	1.250	4	3.375	3.375	0.688	1.000	4.375	0.437	1.000	1.000	4.950	MF-28-08	
M-28	10	5.125	1.125	1.250	4	3.375	3.375	0.688	1.000	4.375	0.437	1.000	1.000	4.950	MF-28-10	
M-28	12	5.125	1.125	1.250	4	3.375	3.375	0.688	1.000	4.375	0.437	1.000	1.000	4.950	MF-28-12	
M-33	8	6.875	1.125	1.500	4	4.875	5.125	0.688	1.250	4.000	0.625	1.125	1.125	4.573	MF-33-08	
M-33	10	6.875	1.125	1.500	4	4.875	5.125	0.688	1.250	4.000	0.625	1.125	1.125	4.573	MF-33-10	
M-33	12	6.875	1.125	1.500	4	4.875	5.125	0.688	1.250	4.000	0.625	1.125	1.125	4.573	MF-33-12	
M-35	8	7.625	1.125	1.500	4.5	5.875	5.875	0.688	1.250	4.500	0.875	0.875	0.875	5.078	MF-35-08	
M-35	10	7.625	1.125	1.500	4.5	5.875	5.875	0.688	1.250	4.500	0.875	0.875	0.875	5.078	MF-35-10	
M-35	12	7.625	1.125	1.500	4.5	5.875	5.875	0.688	1.250	4.500	0.875	0.875	0.875	5.078	MF-35-12	

(11/97) 5M