



RETURN-RITE™

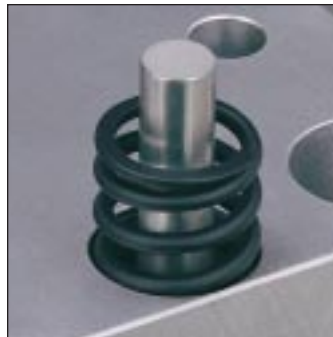
A "New Standard"
Return Pin Spring
Designed Exclusively
for Mold Base
Applications

Return-Rite™ ... the only return spring specially engineered and manufactured for safe and efficient operation of mold base ejector systems.

Unlike ordinary die spring products, Superior's exclusive Return-Rite™ spring design offers positive return action and safer operating specifications for any mold base application. Each spring is specially engineered and uniquely coiled for specific force ratings, which will maintain proper load retention and long operating life. Because of this efficient design you get a smaller, more compact spring that takes up less mold cavity area and does not break through the plate edge, which reduces pinch point and debris jamming.

Return-Rite™ Features:

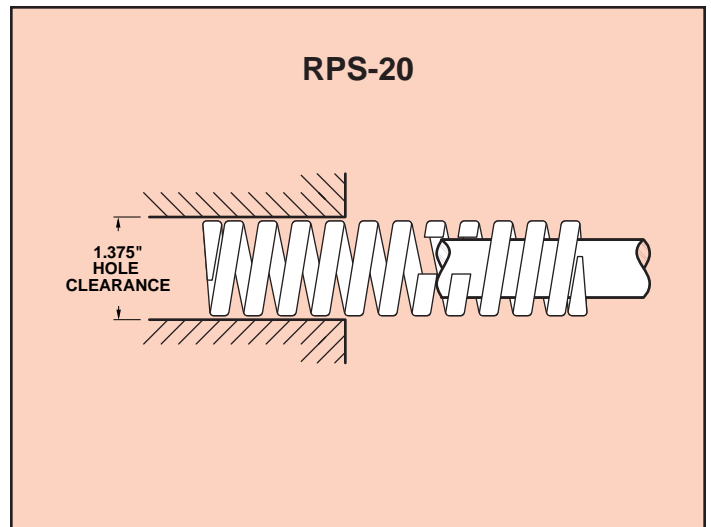
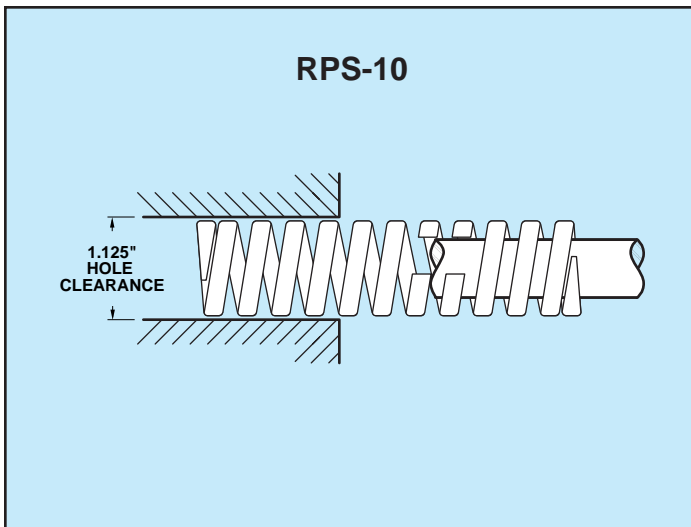
- No need to relocate your return-pins. These springs use standard return pin locations.
- Maintain fast mold base lead times because you use standard mold bases without custom machining delays.
- Saves cavity work area with smaller, more specialized springs. No need to buy larger mold bases to accommodate return springs.
- Reduce pinch points and debris jamming
No plate edge breakthrough!
- Specially designed for any mold base application.



Space Saving: You can use standard mold bases with Return-Rite™ because the springs have small cavity area footprints. There is no need to relocate return pins or buy bigger mold bases any more.

Safe Operation: Compact Return-Rite™ springs eliminate sharp edges and do not break through the plate edge where accidents are more likely to occur.

RETURN-RITE™ MACHINING DATA



Return-Rite™ Spring Selection Guide

Superior Return-Rite™ Mold Base return Springs are specially engineered and manufactured to match the long cycle and operational life of your particular mold base. We recommend you use this selection guide to find the best Return-Rite spring for your mold base application.

To use this chart:

1. Select your mold base size in the chart below.
2. Determine spring length by allowing for stroke length plus .100" preload plus 25% deflection for optimum life (40% maximum deflection).
3. Select the nearest spring free length. **DO NOT** cut these springs.

Mold Size	Spring Free Length (inches)									
	3.0	3.5	4.0	4.5	5.0	5.5	6.0	6.5	7.0	7.5
0808	RPS-1030	RPS-1035	RPS-1040	RPS-1045	RPS-1050	RPS-1055	RPS-1060	RPS-1065	RPS-1070	N/A
0811	RPS-1030	RPS-1035	RPS-1040	RPS-1045	RPS-1050	RPS-1055	RPS-1060	RPS-1065	RPS-1070	N/A
0912	RPS-1030	RPS-1035	RPS-1040	RPS-1045	RPS-1050	RPS-1055	RPS-1060	RPS-1065	RPS-1070	N/A
1008	RPS-1030	RPS-1035	RPS-1040	RPS-1045	RPS-1050	RPS-1055	RPS-1060	RPS-1065	RPS-1070	N/A
1012	RPS-1030	RPS-1035	RPS-1040	RPS-1045	RPS-1050	RPS-1055	RPS-1060	RPS-1065	RPS-1070	N/A
1016	RPS-1030	RPS-1035	RPS-1040	RPS-1045	RPS-1050	RPS-1055	RPS-1060	RPS-1065	RPS-1070	N/A
1020	RPS-1030	RPS-1035	RPS-1040	RPS-1045	RPS-1050	RPS-1055	RPS-1060	RPS-1065	RPS-1070	N/A
1112	RPS-1030	RPS-1035	RPS-1040	RPS-1045	RPS-1050	RPS-1055	RPS-1060	RPS-1065	RPS-1070	N/A
1114	RPS-1030	RPS-1035	RPS-1040	RPS-1045	RPS-1050	RPS-1055	RPS-1060	RPS-1065	RPS-1070	N/A
1118	RPS-1030	RPS-1035	RPS-1040	RPS-1045	RPS-1050	RPS-1055	RPS-1060	RPS-1065	RPS-1070	N/A
1123	RPS-1030	RPS-1035	RPS-1040	RPS-1045	RPS-1050	RPS-1055	RPS-1060	RPS-1065	RPS-1070	N/A
1212	RPS-1030	RPS-1035	RPS-1040	RPS-1045	RPS-1050	RPS-1055	RPS-1060	RPS-1065	RPS-1070	N/A
1215	RPS-1030	RPS-1035	RPS-1040	RPS-1045	RPS-1050	RPS-1055	RPS-1060	RPS-1065	RPS-1070	N/A
1220	RPS-1030	RPS-1035	RPS-1040	RPS-1045	RPS-1050	RPS-1055	RPS-1060	RPS-1065	RPS-1070	N/A
1223	RPS-1030	RPS-1035	RPS-1040	RPS-1045	RPS-1050	RPS-1055	RPS-1060	RPS-1065	RPS-1070	N/A
1315	RPS-1030	RPS-1035	RPS-1040	RPS-1045	RPS-1050	RPS-1055	RPS-1060	RPS-1065	RPS-1070	N/A
1318	RPS-1030	RPS-1035	RPS-1040	RPS-1045	RPS-1050	RPS-1055	RPS-1060	RPS-1065	RPS-1070	N/A
1321	N/A	RPS-2035	RPS-2040	RPS-2045	RPS-2050	RPS-2055	RPS-2060	RPS-2065	RPS-2070	RPS-2075
1323	N/A	RPS-2035	RPS-2040	RPS-2045	RPS-2050	RPS-2055	RPS-2060	RPS-2065	RPS-2070	RPS-2075
1326	N/A	RPS-2035	RPS-2040	RPS-2045	RPS-2050	RPS-2055	RPS-2060	RPS-2065	RPS-2070	RPS-2075
1329	N/A	RPS-2035	RPS-2040	RPS-2045	RPS-2050	RPS-2055	RPS-2060	RPS-2065	RPS-2070	RPS-2075
1518	RPS-1030	RPS-1035	RPS-1040	RPS-1045	RPS-1050	RPS-1055	RPS-1060	RPS-1065	RPS-1070	N/A
1524	N/A	RPS-2035	RPS-2040	RPS-2045	RPS-2050	RPS-2055	RPS-2060	RPS-2065	RPS-2070	RPS-2075
1529	N/A	RPS-2035	RPS-2040	RPS-2045	RPS-2050	RPS-2055	RPS-2060	RPS-2065	RPS-2070	RPS-2075
1616	N/A	RPS-2035	RPS-2040	RPS-2045	RPS-2050	RPS-2055	RPS-2060	RPS-2065	RPS-2070	RPS-2075
1620	N/A	RPS-2035	RPS-2040	RPS-2045	RPS-2050	RPS-2055	RPS-2060	RPS-2065	RPS-2070	RPS-2075
1623	N/A	RPS-2035	RPS-2040	RPS-2045	RPS-2050	RPS-2055	RPS-2060	RPS-2065	RPS-2070	RPS-2075
1626	N/A	RPS-2035	RPS-2040	RPS-2045	RPS-2050	RPS-2055	RPS-2060	RPS-2065	RPS-2070	RPS-2075
1629	N/A	RPS-2035	RPS-2040	RPS-2045	RPS-2050	RPS-2055	RPS-2060	RPS-2065	RPS-2070	RPS-2075
1635	N/A	RPS-2035	RPS-2040	RPS-2045	RPS-2050	RPS-2055	RPS-2060	RPS-2065	RPS-2070	RPS-2075
1724	N/A	RPS-2035	RPS-2040	RPS-2045	RPS-2050	RPS-2055	RPS-2060	RPS-2065	RPS-2070	RPS-2075
1729	N/A	RPS-2035	RPS-2040	RPS-2045	RPS-2050	RPS-2055	RPS-2060	RPS-2065	RPS-2070	RPS-2075
1818	N/A	RPS-2035	RPS-2040	RPS-2045	RPS-2050	RPS-2055	RPS-2060	RPS-2065	RPS-2070	RPS-2075
1820	N/A	RPS-2035	RPS-2040	RPS-2045	RPS-2050	RPS-2055	RPS-2060	RPS-2065	RPS-2070	RPS-2075
1823	N/A	RPS-2035	RPS-2040	RPS-2045	RPS-2050	RPS-2055	RPS-2060	RPS-2065	RPS-2070	RPS-2075
1826	N/A	RPS-2035	RPS-2040	RPS-2045	RPS-2050	RPS-2055	RPS-2060	RPS-2065	RPS-2070	RPS-2075
1829	N/A	RPS-2035	RPS-2040	RPS-2045	RPS-2050	RPS-2055	RPS-2060	RPS-2065	RPS-2070	RPS-2075
1835	N/A	RPS-2035	RPS-2040	RPS-2045	RPS-2050	RPS-2055	RPS-2060	RPS-2065	RPS-2070	RPS-2075
1924	N/A	RPS-2035	RPS-2040	RPS-2045	RPS-2050	RPS-2055	RPS-2060	RPS-2065	RPS-2070	RPS-2075
1929	N/A	RPS-2035	RPS-2040	RPS-2045	RPS-2050	RPS-2055	RPS-2060	RPS-2065	RPS-2070	RPS-2075
1935	N/A	RPS-2035	RPS-2040	RPS-2045	RPS-2050	RPS-2055	RPS-2060	RPS-2065	RPS-2070	RPS-2075
2424	N/A	RPS-2035	RPS-2040	RPS-2045	RPS-2050	RPS-2055	RPS-2060	RPS-2065	RPS-2070	RPS-2075
2429	N/A	RPS-2035	RPS-2040	RPS-2045	RPS-2050	RPS-2055	RPS-2060	RPS-2065	RPS-2070	RPS-2075
2435	N/A	RPS-2035	RPS-2040	RPS-2045	RPS-2050	RPS-2055	RPS-2060	RPS-2065	RPS-2070	RPS-2075

Return-Rite™

Specifications:

Select your Return-Rite spring from the chart on page 3. These tables will give you technical specifications and exact dimensions for the spring you choose.

When Ordering Please Specify:

1. Part Number
2. Quantity

FORCE 10

Catalog Number	Dimensional Data (inches)			Load Deflection Data (lbs)		
	Outside Diameter	Inside Diameter	Free Length	Preload (at .100")	Optimum Life (at 25%)	Max Deflection (at 40%)
RPS-1030	1.100	0.788	3.00	13.33	100.00	160.00
RPS-1035	1.100	0.788	3.50	11.40	100.00	160.00
RPS-1040	1.100	0.788	4.00	10.00	100.00	160.00
RPS-1045	1.100	0.788	4.50	8.90	100.00	160.00
RPS-1050	1.100	0.788	5.00	8.00	100.00	160.00
RPS-1055	1.100	0.776	5.50	7.27	100.00	160.00
RPS-1060	1.100	0.776	6.00	6.67	100.00	160.00
RPS-1065	1.100	0.776	6.50	6.15	100.00	160.00
RPS-1070	1.100	0.776	7.00	5.71	100.00	160.00

FORCE 20

Catalog Number	Dimensional Data (inches)			Load Deflection Data (lbs)		
	Outside Diameter	Inside Diameter	Free Length	Preload (at .100")	Optimum Life (at 25%)	Max Deflection (at 40%)
RPS-2040	1.350	0.936	4.00	20.00	200.00	320.00
RPS-2045	1.350	0.936	4.50	17.78	200.00	320.00
RPS-2050	1.350	0.936	5.00	16.00	200.00	320.00
RPS-2055	1.350	0.936	5.50	14.54	200.00	320.00
RPS-2060	1.350	0.936	6.00	13.33	200.00	320.00
RPS-2065	1.350	0.936	6.50	12.30	200.00	320.00
RPS-2070	1.350	0.936	7.00	11.43	200.00	320.00
RPS-2075	1.350	0.936	7.50	10.67	200.00	320.00

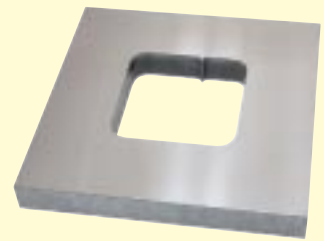
DO NOT cut these springs.



Standard and Custom Mold Bases.

Superior manufactures this and several other exclusive components as well as a full line of complete or rough finished mold bases and die sets. Call today for your free catalog or visit our web site at <http://www.supdie.com>

Ask for our free CD-ROM Design Package!



Torch Cut Pockets

With Superior you make the molds, we make the rest.



Mold Plate, Rough, and Finished Machining Services



900 West Drexel Avenue
Oak Creek, WI 53154-0008

Local (414) 764-4900 • Toll Free (800) 558-6040
Fax (800) 657-0855

messages@supdie.com • Web www.supdie.com



Slide Lock™ and Other Mold Base Components